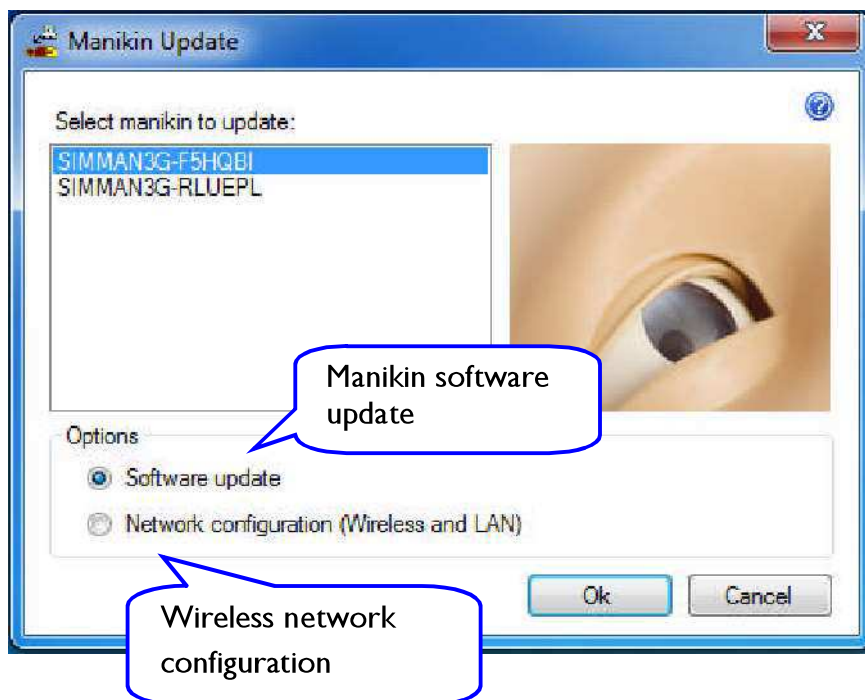


## Manikin Update

For help with a specific topic or function, please click on a topic or area of the Manikin Update screen in the Main menu below. Alternatively, use this document from beginning to end as a complete guide to the Manikin Update program. You can return to this menu by using the [Main menu](#) hyperlinks throughout this document.

### Main menu

<b>Introduction.....</b>	<b>2</b>
What the Manikin Update does.....	2
Preparations.....	2
Follow the below instructions to ensure a safe update.....	2
How to start the Manikin Update.....	2
<b>Main window.....</b>	<b>3</b>
<b>Manikin software update.....</b>	<b>4</b>
Troubleshooting.....	7
<b>Wireless network configuration.....</b>	<b>8</b>
Remote desktop to the manikin computer.....	18



[Main menu](#)

## **Introduction**

### ***What the Manikin Update does***

Manikin Update provides two separate functions that allow the user to configure or update the software inside the SimMan 3G manikin:

- Updating the manikin software to the version of the installed on the computer on which the Manikin Update program is started from. This should be done whenever you have obtained a new SimMan 3G software and installed it on you instructor computer.
- Change the network configuration of the wireless network adapter located inside the manikin. Also the manikin computer name can be changed.

### ***Preparations***

Follow the below instructions to ensure a safe update.

- Make sure you have installed the latest version of the SimMan 3G software on the Instructor PC.
- Turn off wireless networks by using the slider switch on the side of the Instructor PC tablet.
- Power on the manikin. Do not start the Instructor Application or Patient Monitor Application.
- Connect a direct network cable from the manikin to the Instructor PC (\*). Allow 60 seconds for a connection to be established.
- Make sure the manikin is powered on is breathing.

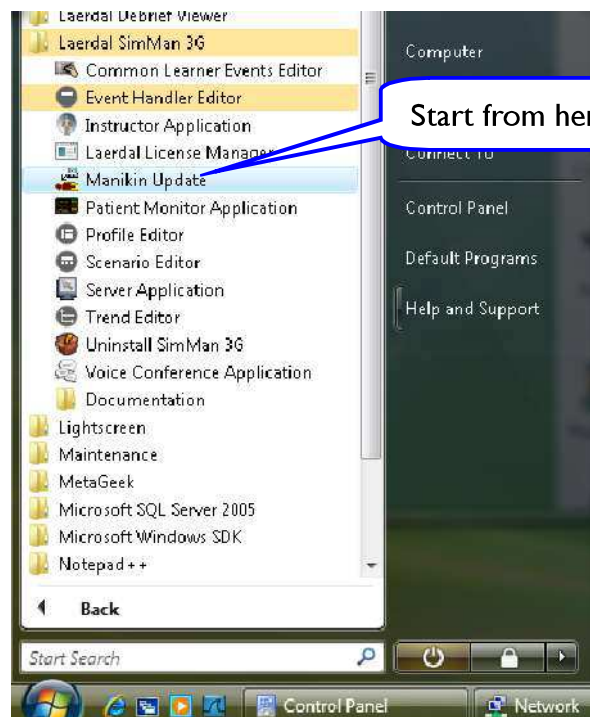
(\*) When using direct cable, your computer's LAN adapter must be configured with IP address 192.168.169.3. This is default on computers that comes with your SimMan 3G/Essential simulator. See the section "IP address" under "Station mode – adhoc" for a description on how to change IP address. Make sure to change the address of your local area network adapter and not the wireless network adapter.

### ***How to start the Manikin Update***

Please note that you must not power off the manikin during the following process! Never update the manikin software from an Instructor PC connected to the manikin with a wireless connection.

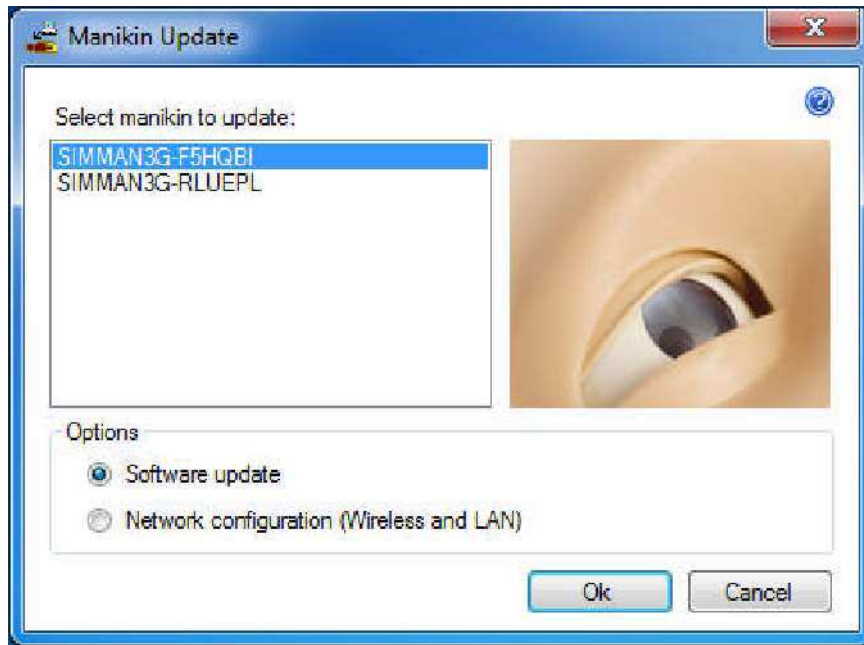
Manikin Update is started from the Windows start menu by clicking the Manikin Update item in the Laerdal SimMan 3G menu:

[Main menu](#)



## **Main window**

When the Manikin Update program is started the select manikin window will be shown. After a short while the available manikins will be displayed in the “Select manikin to update:” list box:

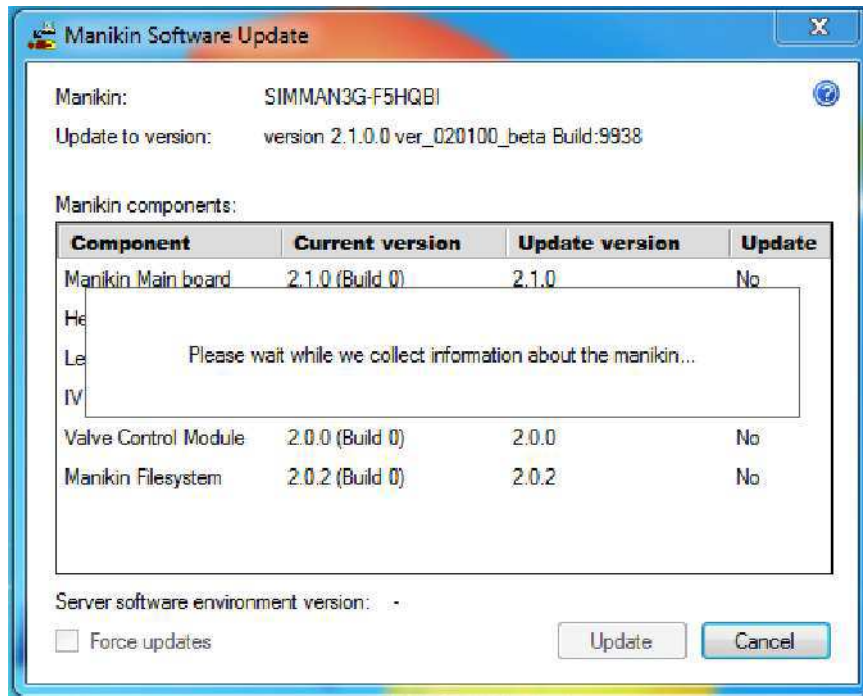


To continue select the manikin you want to change and select either the “Software update” or the “Network configuration (Wireless and LAN)” radio button. Then press “Ok”.

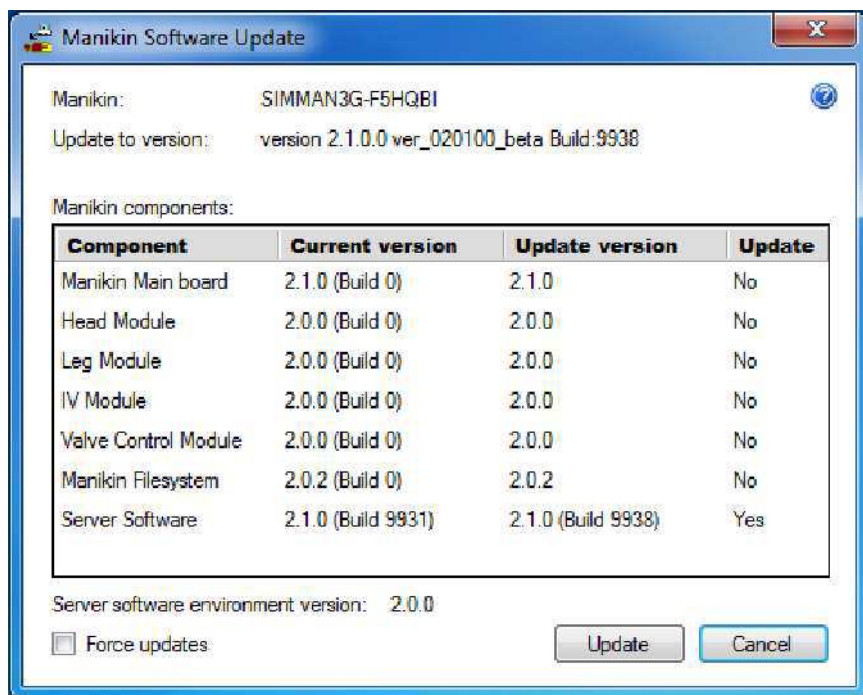
[Main menu](#)

## Manikin software update

When choosing the “Software update” radio button and pressing “Ok” the Manikin Update program will start retrieving information from about what software is currently installed on the manikin. This will take about 2 minutes.



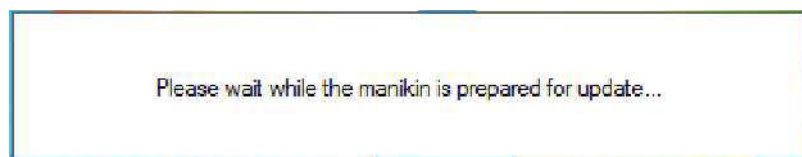
Then the SimMan 3G Update Manager will display an overview comparing software available on the manikin (Current version) versus software available on your computer (Update version):



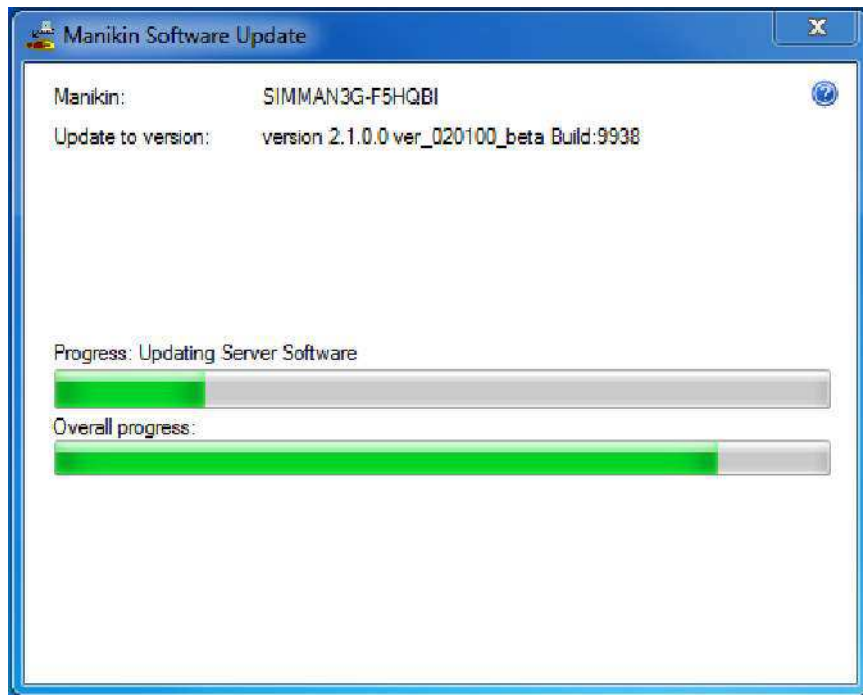
This window contains the following information:

- **Manikin.** This is the computer name of the manikin to be updated.
- **Update to version.** This is the version of the SimMan 3G installation on the computer running the Manikin Update program. If you choose to update the manikin software this is the version that will be installed.
- **Component.** Contains the name of each of the software components on the manikin. The “Manikin Main board”, “Head Module”, “Leg Module”, “IV Module”, and “Valve Control Module” are electronic boards controlling various parts of the manikin, whereas the “Manikin Filesystem” and “Server Software” relates to the main manikin computer.
- **Current version.** The current version of the software installed on a manikin component.
- **Update version.** The version of the software to be installed on each of the manikin components
- **Update.** Whether the software will be updated or not when pressing Update. In the current example only the server software will be updated.
- **Server software environment version.** This is the version of the operating system image installed on the manikin. This will not change when updating the software using the Manikin Update program.
- **Force updates.** Enable this checkbox to force installing all software even if the software version on the manikin is the same or newer than the software to be installed. This is how you downgrade your manikin software to a previous version.
- **Update.** Pressing this button starts the software update process.
- **Cancel.** Closes the software update program.

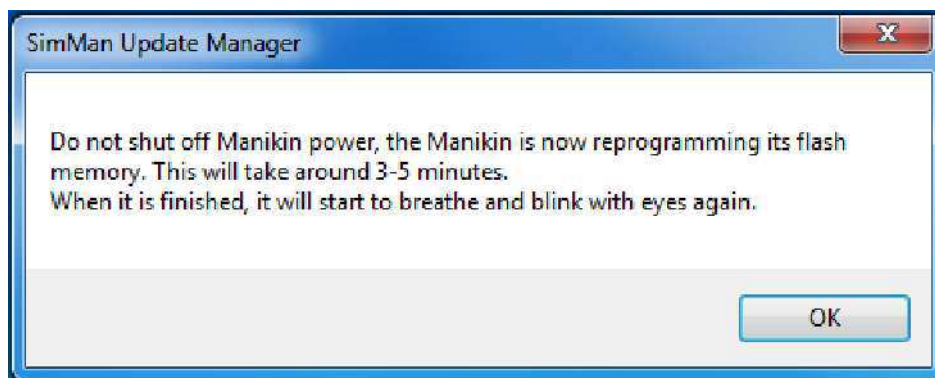
After pressing Update the manikin is prepared for update:



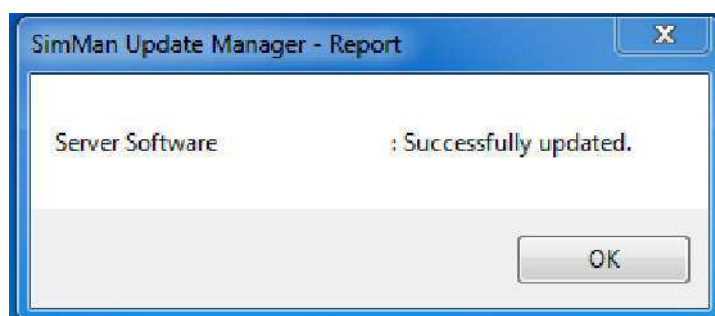
After a couple of minutes the software begins to install:



This will take up to five minutes depending on which software packages that are being installed. After it is done the following dialog appears:



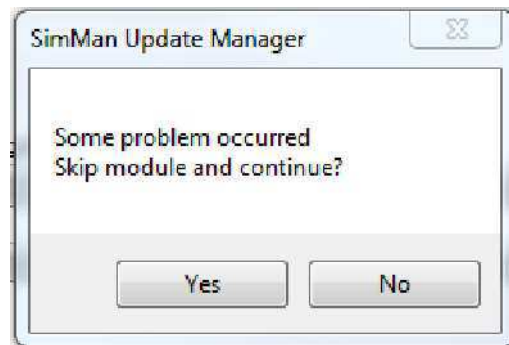
When pressing Ok the status report is shown:



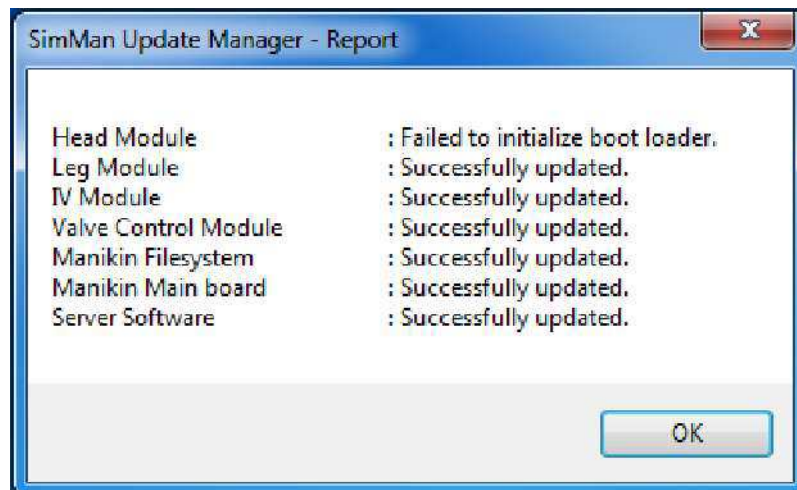
After 3-5 minutes the manikin will be updated and ready to use again.

**Troubleshooting**

Should the following message appear on the screen during the update, click <Yes> to continue the installing updates:



In the SimMan 3G Manager - Report: If any updates have failed, do run Manikin Update again. Should the same module fail repeatedly, check to see whether all internal wiring is connected and functioning properly.



[Main menu](#)