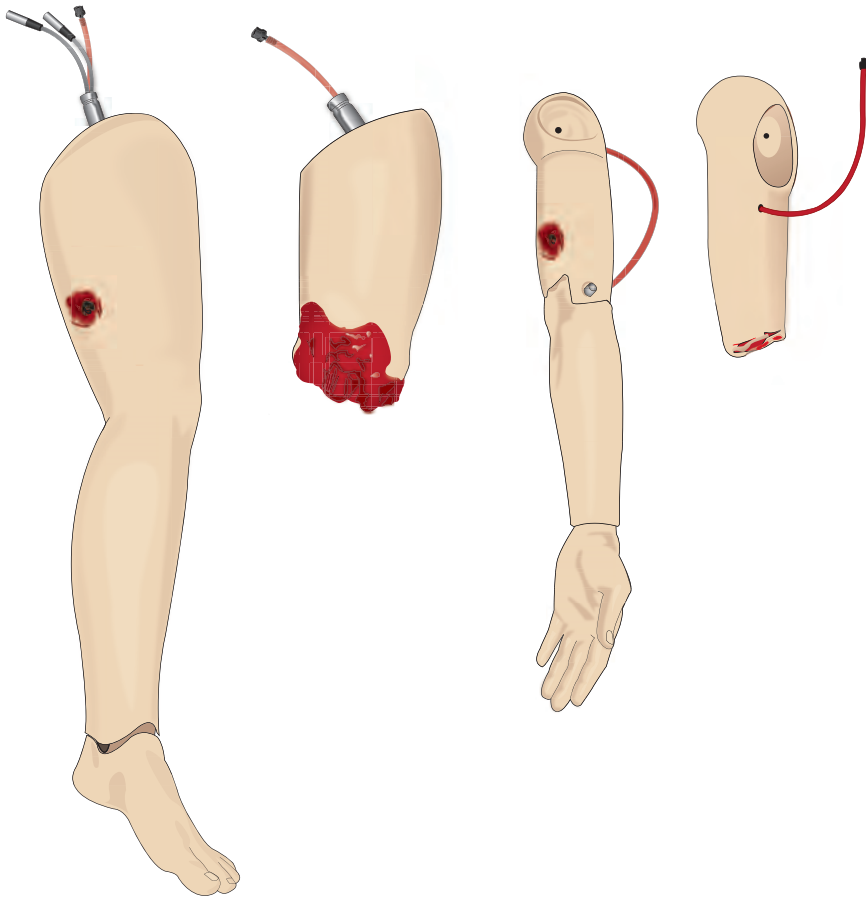


SimMan 3G Bleeding Modules

Directions for Use



www.laerdal.com



Laerdal

helping save lives



Contents

Removing SimMan 3G Left Arm	4
Attaching SimMan 3G Amputation or Shotgun Arm	5
Replacing SimMan 3G Left Leg with Trauma Leg	6
Spare Parts	7

Introduction

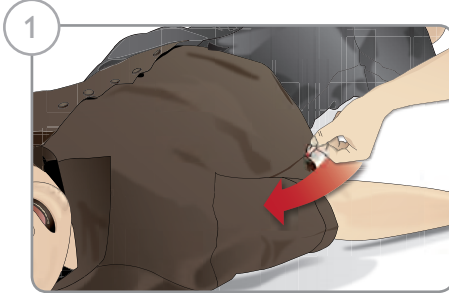
The *SimMan 3G Bleeding Module* kit includes trauma modules which can be fitted to *SimMan 3G* to simulate bleeding patient cases. After the simulation is completed, leave the trauma modules connected, and perform the cleaning instructions as stated in *SimMan 3G Directions for Use*.

Items Included

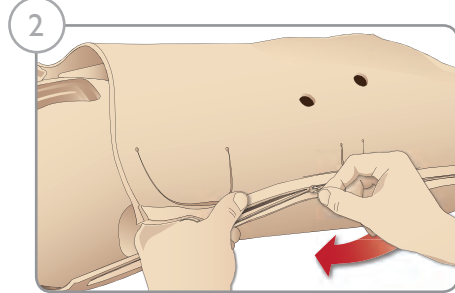
The following items are included with this kit:

- Amputated Arm SimMan 3G
- Gunshot Arm SimMan 3G
- Amputated Leg SimMan 3G
- Gunshot Leg SimMan 3G
- Hardware kit
- Directions for Use
- Warranty booklet

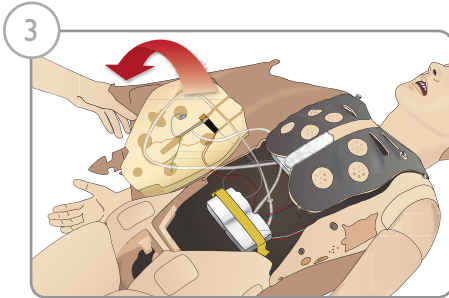
Removing SimMan 3G Left Arm



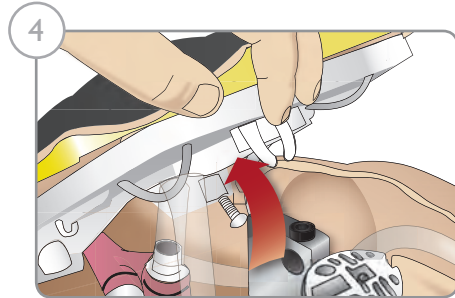
1. Unzip the clothing zippers on the right side. Remove the shirt.



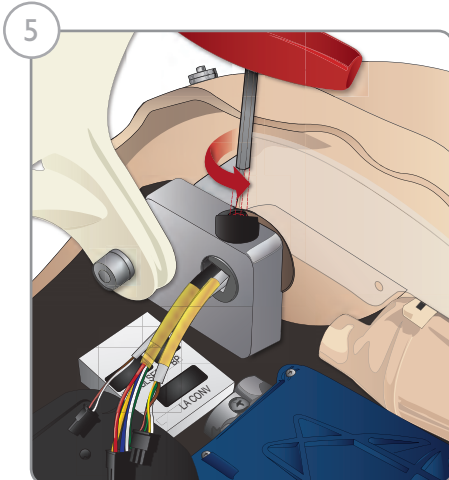
2. Unzip the zippers on the left side of the torso. Open the Torso Skin to one side.



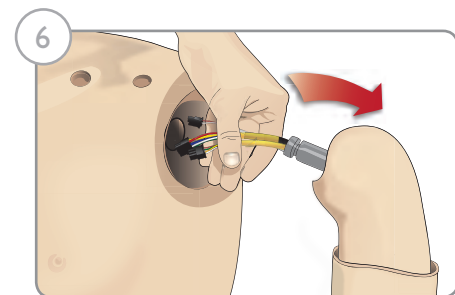
3. Open the Stomach Foam to one side.



4. Lift the hinged chest plate to access the arm bolt.



5. Unscrew the left Arm screw with the allen key and disconnect all Arm cables.

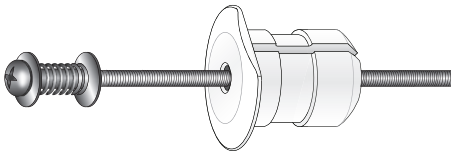


6. Remove the arm with cables from the arm socket.

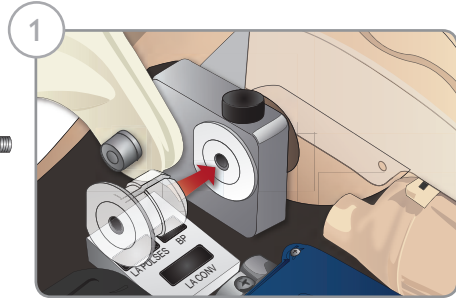


Note: Do not unscrew the Arm Screw fully.

Attaching SimMan 3G Amputation or Shotgun Arm

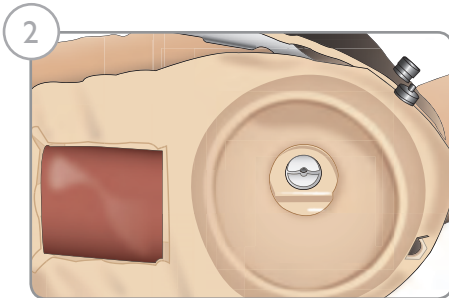


The Arm Adapter and Adapter Screw are designed to attach an Amputation or Shotgun Arm to the SimMan 3G manikin.

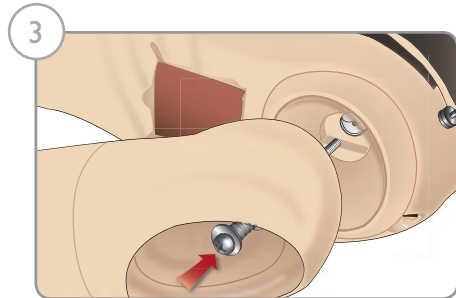


1. Fit the Arm Adapter into the hole in the arm bracket from inside of the torso.

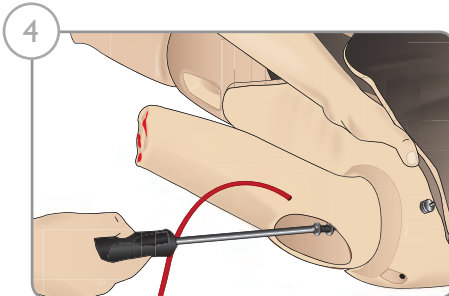
Ensure that the flat edge of the adapter is facing the chest hinge.



2. The Adapter is now in place and the Trauma Arm can now be connected with the Adapter Screw.

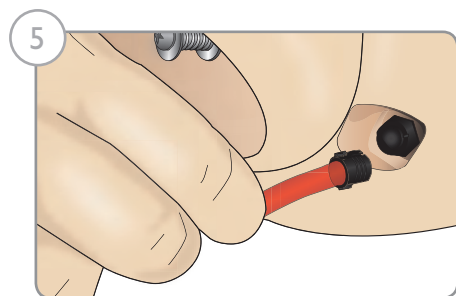


3. Thread the Adapter Screw through the Amputation Arm and align the screw with the hole in the Arm Adapter.



4. Secure the Adapter with one hand from inside the torso. Screw the Adapter Screw using the Phillips screwdriver.

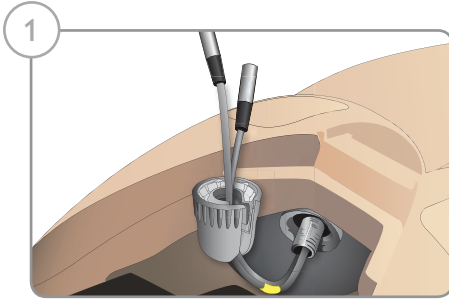
Note: Tighten screw as desired to simulate more or less Arm Range of Motion.



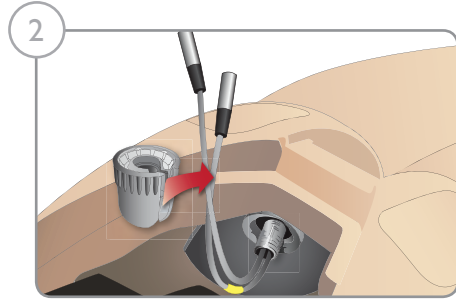
5. Connect the red tube from the Amputation Arm to the nearest blood port on the torso.

Caution: Do not over rotate arm. Over rotating the Arm may cause the red vinyl tubing to disconnect.

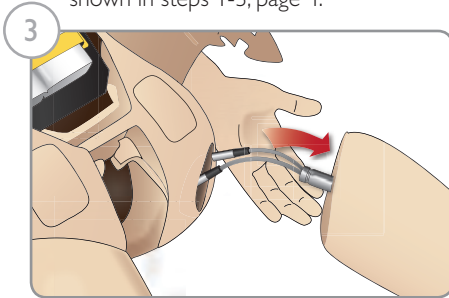
Replacing SimMan 3G Left Leg with Trauma Leg



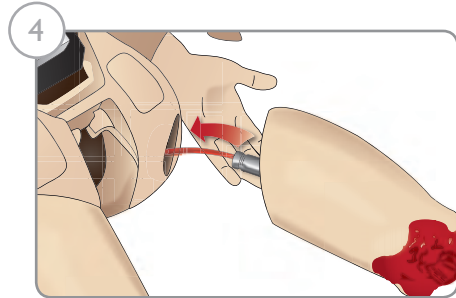
1. Remove the SimMan 3G default leg. Open Torso skin and stomach foam as shown in steps 1-3, page 4.



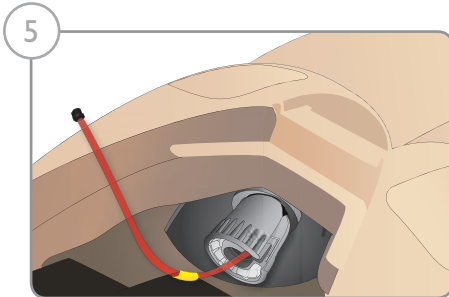
2. Unscrew hip joint connector. Remove the leg cables/tubes from the connector.



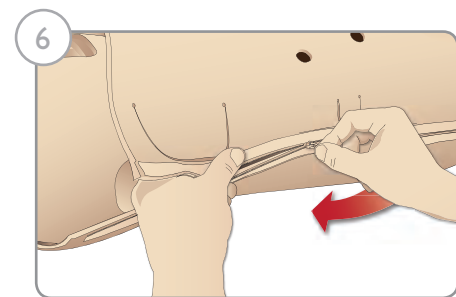
3. Carefully remove the left leg with cables and tubes.



4. Insert the Amputation or Gunshot leg with blood tube into the leg socket.



5. Insert the blood tube into the side slot of the connector. Screw the connector in place with one hand.



6. Connect the leg tube to the corresponding tube, as labelled inside the torso.

7. Close the stomach foam and zip the torso skin back into place.

Spare Parts

Items listed below are replacements parts for the SimMan 3G Bleeding Module kit.

212-07850	Amputated Arm SimMan 3G
212-07950	Gunshot arm SimMan 3G
212-08150	Amputated Leg SimMan 3G
212-08250	Gunshot Leg SimMan 3G
212-08350	Hardware Kit
212-08450	SimMan 3G Bleeding Trauma Directions for Use
212-07650	Arm Adapter Screw
212-14250	Arm Adapter



Laerdal
helping save lives