

# SimJunior™ Quick Setup Guide

## I GET TO KNOW THE SUPPORT MATERIALS

- SimJunior Quick Setup Guide - this document
- SimJunior DFU - included with your SimJunior
- SimPad DFU - included with your Link Box.
- SimJunior Simulator Software help files on Software CD

## II CHECK THAT ALL ITEMS ARE PRESENT



© 2012 Laerdal Medical All Rights reserved  
PN 20-05755 Rev A

### CHECK EQUIPMENT

(Images below are examples only. Actual components may vary.)

#### SimJunior Advanced Components



#### SimJunior - Components Required for Setup

- Link Box
- Li-Ion Battery
- Cable Adapter
- Ethernet Cable
- Power Cable
- AC Adapter



### 1 START THE INSTRUCTOR COMPUTER

- Connect the mouse and power supply to the computer and power ON.
- Make sure that the SimJunior simulator icon is displayed on the Instructor PC desktop.



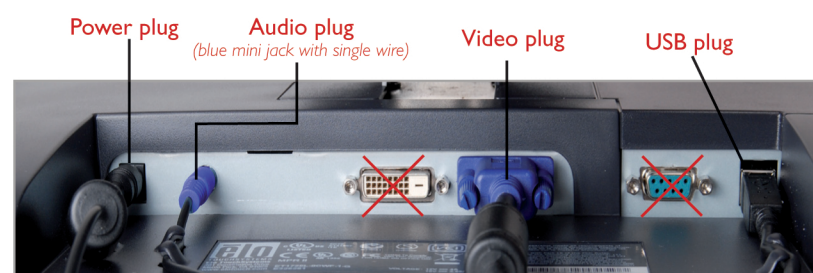
### 2 INSTALL THE USB HUB

- Connect Power to the USB hub.
- Connect smaller end of included USB cable into the upstream port of the USB hub.
- Plug the rectangular end of the included USB cable into a USB port on the Instructor Computer.



### 3 CONNECT THE PATIENT MONITOR CABLES

- Put aside the software CD that comes with the monitor. DO NOT INSTALL software CD.
- Route the cables through the Patient Monitor stand and connect them to the corresponding outlets located at the bottom of the screen.



- Secure the cables using the strain reliefs.
- Connect power cable to a wall outlet and power ON the Patient Monitor.

Δ IMPORTANT: Do NOT connect the USB cable to the USB hub yet.

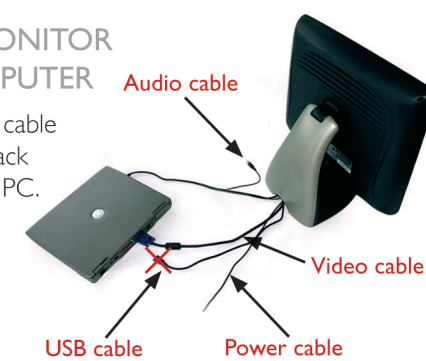
Δ IMPORTANT: Do NOT use the Patient Monitor software CD that comes with the Manikin.

# SimJunior™ Quick Setup Guide

### 4 CONNECT THE PATIENT MONITOR TO THE INSTRUCTOR COMPUTER

- Connect the Patient Monitor video cable and 3-way audio cable (black mini jack with double wire) to the Instructor PC.

Δ IMPORTANT: Do NOT connect the USB cable to the Patient Monitor yet.



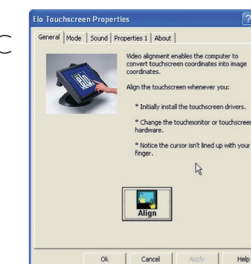
### 5 SET UP THE INSTRUCTOR PC FOR EXTENDED DESKTOP DISPLAY TO SUPPORT THE PATIENT MONITOR

- Right click on the instructor PC desktop.
- In the drop down menu select <Screen Resolution>.
- In the <Multiple Displays> option, select <Extend these displays>.
- Click <Apply>.
- The Instructor PC (display 1) should have a resolution of 1600 x900.
- The Patient Monitor (display 2) should have a resolution of 1280 x 1024.
- Click <OK>.

### 6 CONNECT THE MONITOR TO THE USB HUB

### 7 CALIBRATE THE TOUCHSCREEN PATIENT MONITOR

- Double-click on the Elo logo in the system tray in the lower right corner of the screen.
- In the menu that appears select <Elo Touchscreen Properties>.
- Click the <Align> button in the dialog box.
- If target indicators first appear on the Instructor PC (laptop computer) screen, press Esc, or wait until they appear on the Patient Monitor.
- When the target indicator appears on the Patient Monitor; touch each target as it changes position.
- Follow the on-screen instructions then touch the green "checkbox" button.
- Click OK.



### 8 CONNECT THE USB CAMERA TO THE USB HUB

### 9 CONNECT THE LINK BOX

- Connect the Network cable from the Link Box to the Instructor Computer.
- Connect the audio cable (white mini jack with single wire) to the Link Box.
- Connect the power cable or battery to the Link Box (do not power on).

### 10 CONNECT THE MANIKIN TO THE LINK BOX

- Connect the 37-Pin Serial Cable from the manikin to the Cable Adapter then connect the Cable Adapter to the Link Box.
- Place the Blood Pressure cuff on the left arm of the manikin.
- Connect the clear tubing from the Blood Pressure cuff to the Link Box.
- Connect the Manikin to a power supply.
- Power on the Link Box.



You are now ready to start using your SimJunior Advanced system

## Setup of SimJunior Components

